

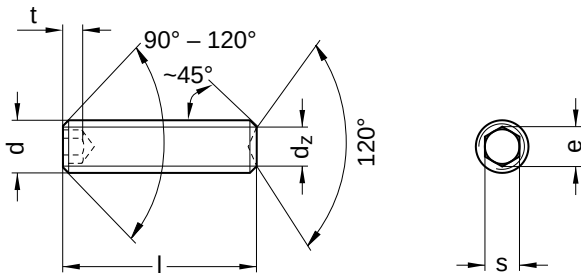
**ISO 4029** identical with DIN 916

## Set screws

Hexagon socket | with ring cutting

Stainless steel A2 | Cr(VI)-free | Metric thread

Further information: ISO-standard has been withdrawn | Threaded pins are not intended for use under tensile load



Diameter (d)	dz		e	s		Pitch (P)	t	Tool size	
	min.	max.		nominal size	min.				max.
M1.6	0.55	0.8	0.81	0.7	0.71	0.72	0.35	1.5	SW 0,7
M2	0.75	1.0	1.01	0.9	0.89	0.91	0.40	1.7	SW 0,9
M2.5	0.95	1.2	1.45	1.3	1.28	1.30	0.45	2.0	SW 1,3
M3	1.15	1.4	1.73	1.5	1.52	1.58	0.50	2.0	SW 1,5
M4	1.75	2.0	2.30	2.0	2.02	2.08	0.70	2.5	SW 2
M5	2.25	2.5	2.87	2.5	2.52	2.58	0.80	3.0	SW 2,5
M6	2.75	3.0	3.44	3.0	3.02	3.08	1.00	3.5	SW 3
M8	4.70	5.0	4.58	4.0	4.02	4.10	1.25	5.0	SW 4
M10	5.70	6.0	5.72	5.0	5.02	5.14	1.50	6.0	SW 5
M12	7.64	8.0	6.86	6.0	6.02	6.14	1.75	8.0	SW 6
M16	9.64	10.0	9.15	8.0	8.02	8.18	2.00	10.0	SW 8
M20	13.57	14.0	11.43	10.0	10.02	10.18	2.50	12.0	SW 10

nominal size	Length (l)	
	min.	max.
2.0	1.80	2.20
2.5	2.30	2.70
3.0	2.80	3.20
4.0	3.76	4.24
5.0	4.76	5.24
6.0	5.76	6.24
8.0	7.71	8.29
10.0	9.71	10.29
12.0	11.65	12.35
14.0	13.65	14.35

nominal size	Length (l)	
	min.	max.
16.0	15.65	16.35
20.0	19.58	20.42
25.0	24.58	25.42
26.0	25.58	26.42
30.0	29.58	30.42
35.0	34.50	35.50
40.0	39.50	40.50
45.0	44.50	45.50
50.0	49.50	50.50
60.0	59.40	60.60

All technical data refer to the measure mm



**ISO 4029** identical with DIN 916

## Set screws

Hexagon socket | with ring cutting

Stainless steel A2 | Cr(VI)-free | Metric thread

Diameter (d)	Length (l)																				
	2	2.5	3	4	5	6	8	10	12	14	16	20	25	26	30	35	40	45	50	60	
M1.6	●		●	●	●	●	●														
M2			●	●										●							
M2.5		●	●	●		●		●													
M3			●	●	●	●	●	●	●		●										
M4				●	●	●	●	●	●	●	●	●									
M5					●	●	●	●	●	●	●	●	●								
M6						●	●	●	●	●	●	●	●			●	●	●	●	●	
M8							●	●	●	●	●	●	●		●	●	●	●			
M10								●	●		●	●	●		●	●	●	●	●	●	
M12									●		●	●	●		●	●	●	●	●	●	●
M16											●	●				●	●	●	●	●	●
M20												●	●		●	●	●	●	●	●	●

● Combinations available in the eShop | Other sizes on request

All technical data refer to the measure mm

