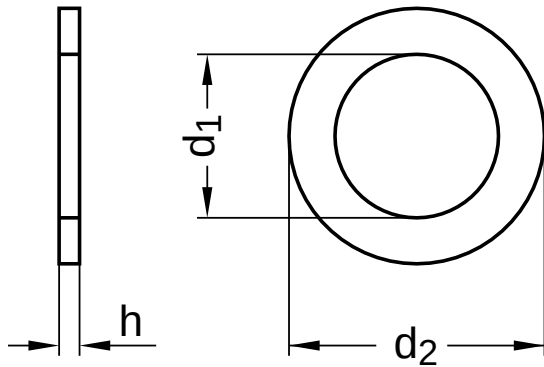
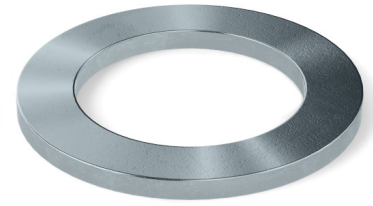


DIN 988
Shim rings

Spring steel | zinc-plated, thick-film passivated (VZD) | Cr(VI)-free



Diameter (d)	nominal size	d ₁		nominal size	d ₂		h	
		min.	max.		min.	max.	min.	max.
25	25	25.06	25.28	36	35.67	35.92	1.95	2.0
26	26	26.06	26.28	37	36.67	36.92	1.95	2.0
30	30	30.06	30.28	42	41.67	41.92	2.45	2.5
32	32	32.08	32.33	45	44.67	44.92	2.45	2.5
35	35	35.08	35.33	45	44.67	44.92	2.45	2.5
40	40	40.08	40.33	50	49.67	49.92	2.45	2.5

All technical data refer to the measure mm

