

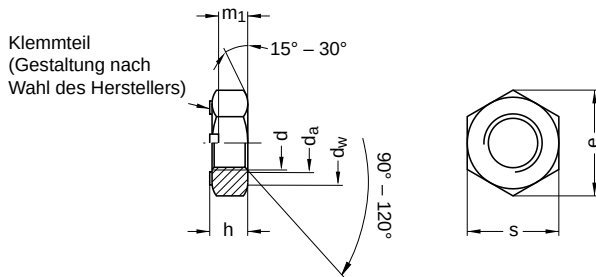
**DIN 980** similar to ISO 7042

## Hexagon nuts

With clamping part | all metal | form V: one-piece

Steel 10 | zinc-plated | Cr(VI)-free | Metric fine thread

Further information: DIN standard has been withdrawn | modified nut height and wrench width



Diameter (d)	d <sub>a</sub>		d <sub>w</sub>	h		m <sub>1</sub>	e	s		Pitch (P)	Tool size
	min.	max.		min.	max.			min.	max.		
M12 x 1.5	12	13.0	17.4	11	12	6.6	21.10	18.67	19	1.5	SW 19
M14 x 1.5	14	15.1	20.5	12	14	7.7	24.49	21.67	22	1.5	SW 22
M16 x 1.5	16	17.3	22.5	14	16	8.8	26.75	23.67	24	1.5	SW 24
M20 x 1.5	20	21.6	27.7	18	20	11.0	32.95	29.16	30	1.5	SW 30

All technical data refer to the measure mm

