

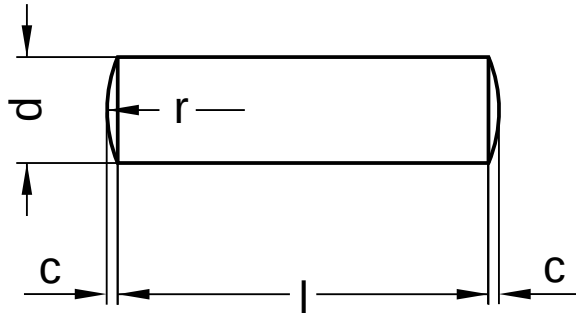
**DIN 7** similar to ISO 2338

## Parallel pins

With oval point | tolerance field m6

Stainless steel A4 | Cr(VI)-free

Further information: DIN-standard has been withdrawn



Diameter (d)	c max.	r
1	0.15	1.0
1.5	0.23	1.6
2	0.30	2.0
2.5	0.40	2.5
3	0.45	3.0
4	0.60	4.0
5	0.75	5.0
6	0.90	6.0
8	1.20	8.0
10	1.50	10.0
12	1.80	12.0
14	2.00	16.0
16	2.50	16.0
20	3.00	20.0

All technical data refer to the measure mm



**DIN 7** similar to ISO 2338

## Parallel pins

With oval point | tolerance field m6

Stainless steel A4 | Cr(VI)-free

Length (l) nominal size	Length (l) nominal size
3	32
4	36
5	40
6	45
8	50
10	55
12	60
14	70
16	80
18	90
20	100
24	
28	
30	

Diameter (d)	Length (l)																										
	3	4	5	6	8	10	12	14	16	18	20	24	28	30	32	36	40	45	50	55	60	70	80	90	100		
1	●	●	●	●	●	●	●																				
1.5	●	●	●	●	●	●	●	●	●																		
2		●	●	●	●	●	●	●	●	●																	
2.5		●	●	●	●	●	●	●	●	●	●	●	●	●													
3		●	●	●		●	●	●	●	●	●	●	●	●	●												
4			●	●	●	●	●	●	●	●	●	●	●	●	●	●	●	●	●								
5				●	●	●	●	●	●	●	●	●	●	●	●	●	●	●	●	●							
6				●	●	●	●	●	●	●	●	●	●	●	●	●	●	●	●	●	●	●					
8					●	●	●	●	●	●	●	●	●	●	●	●	●	●	●	●	●	●	●	●	●	●	●
10							●	●	●	●	●	●	●	●	●	●	●	●	●	●	●	●	●	●	●	●	●
12								●	●	●	●		●	●	●	●	●	●	●	●	●	●	●	●	●	●	●
14									●	●	●	●	●		●	●	●	●	●	●	●	●	●	●	●	●	●
16										●	●	●	●	●		●	●	●	●	●	●	●	●	●	●	●	●
20												●		●			●	●	●	●	●	●	●	●	●	●	●

• Combinations available in the eShop | Other sizes on request

All technical data refer to the measure mm

