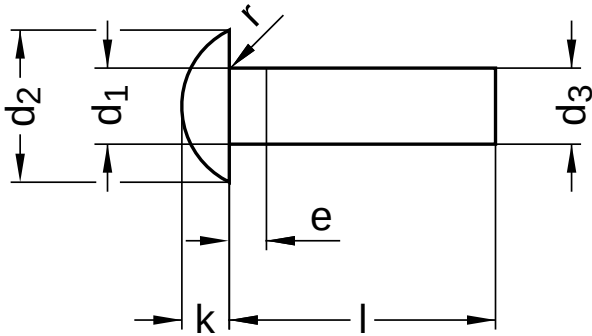


DIN 660
Round head rivets

Stainless steel A2 | Cr(VI)-free



Diameter (d)	nominal size	d ₁		d ₂ nominal size	d ₃ min.	e max.	k nominal size	r max.
		min.	max.					
2	2	1.90	2.10	3.5	1.87	1.0	1.2	0.2
3	3	2.90	3.10	5.2	2.87	1.5	1.8	0.2
4	4	3.90	4.10	7	3.87	2.0	2.4	0.3
5	5	4.85	5.15	8.8	4.82	2.5	3.0	0.4
6	6	5.85	6.15	10.5	5.82	3.0	3.6	0.4

nominal size	Length (l)	
	min.	max.
6	5.70	6.30
8	7.64	8.36
10	9.64	10.36
12	11.57	12.43
15	14.57	15.43
16	15.57	16.43
18	17.57	18.43
20	19.48	20.52

nominal size	Length (l)	
	min.	max.
25	24.48	25.52
30	29.48	30.52
35	34.38	35.62
40	39.38	40.62
45	44.38	45.62
50	49.38	50.62

Diameter (d)	Length (l)														
	6	8	10	12	15	16	18	20	25	30	35	40	45	50	
2	●	●	●	●	●	●	●	●	●						
3	●	●	●	●	●	●	●	●	●	●					
4	●	●	●	●	●	●	●	●	●	●	●				
5	●	●	●	●	●	●	●	●	●	●	●	●			
6		●	●	●	●	●	●	●	●	●	●	●	●	●	

• Combinations available in the eShop | Other sizes on request

All technical data refer to the measure mm

