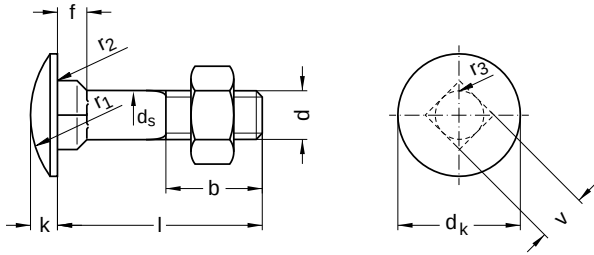


DIN 603

Mushroom head bolts

With square neck | without nut

Stainless steel A2 | Cr(VI)-free | Metric thread



Diameter (d)	b			dk		ds		f	
	l up to 125	l up to 200	l longer than 200	min.	max.	min.	max.	min.	max.
M5	16	22	–	12.45	13.55	4.52	5	2.90	4.10
M6	18	24	–	15.45	16.55	5.52	6	3.40	4.60
M8	22	28	41	19.35	20.65	7.42	8	4.40	5.60
M10	26	32	45	23.35	24.65	9.42	10	5.40	6.60
M12	30	36	49	29.35	30.65	11.30	12	7.25	8.75
M16	38	44	57	37.20	38.80	15.30	16	11.10	12.90

Diameter (d)	k		r1	r2	r3	Pitch (P)	v	
	min.	max.	nominal size	nominal size	max.		min.	
M5	2.70	3.30	10.7	0.5	0.75	0.80	5.48	4.52
M6	3.12	3.88	12.6	0.5	0.90	1.00	6.48	5.52
M8	4.12	4.88	16.0	0.5	1.20	1.25	8.58	7.42
M10	4.62	5.38	19.2	0.5	1.50	1.50	10.58	9.42
M12	6.05	6.95	24.1	1.0	1.80	1.75	12.70	11.30
M16	8.05	8.95	29.3	1.0	2.40	2.00	16.70	15.30

nominal size	Length (l)	
	min.	max.
16	15.10	16.90
20	18.95	21.05
25	23.95	26.05
30	28.95	31.05
35	33.75	36.25
40	38.75	41.25
45	43.75	46.25
50	48.75	51.25

nominal size	Length (l)	
	min.	max.
55	53.50	56.50
60	58.50	61.50
65	63.50	66.50
70	68.50	71.50
75	73.50	76.50
80	78.50	81.50
90	88.25	91.75
100	98.25	101.75

nominal size	Length (l)	
	min.	max.
110	108.25	111.75
120	118.25	121.75
130	128.00	132.00
140	138.00	142.00
150	148.00	152.00
180	176.00	184.00

All technical data refer to the measure mm



DIN 603

Mushroom head bolts

With square neck | without nut

Stainless steel A2 | Cr(VI)-free | Metric thread

Diameter (d)	Length (l)																						
	16	20	25	30	35	40	45	50	55	60	65	70	75	80	90	100	110	120	130	140	150	180	
M5	●	●	●	●	●	●	●	●	●	●	●		●	●									
M6	●	●	●	●	●	●	●	●	●	●	●	●		●	●	●	●	●	●				
M8	●	●	●	●	●	●	●	●	●	●	●	●		●	●	●	●	●	●			●	
M10		●	●	●	●	●	●	●	●	●	●	●	●	●	●	●	●	●	●	●	●	●	●
M12			●	●	●	●	●	●	●	●	●	●		●	●	●	●	●	●	●	●	●	●
M16				●	●	●	●	●	●		●	●	●	●	●	●	●	●	●	●	●	●	●

• Combinations available in the eShop | Other sizes on request

All technical data refer to the measure mm

